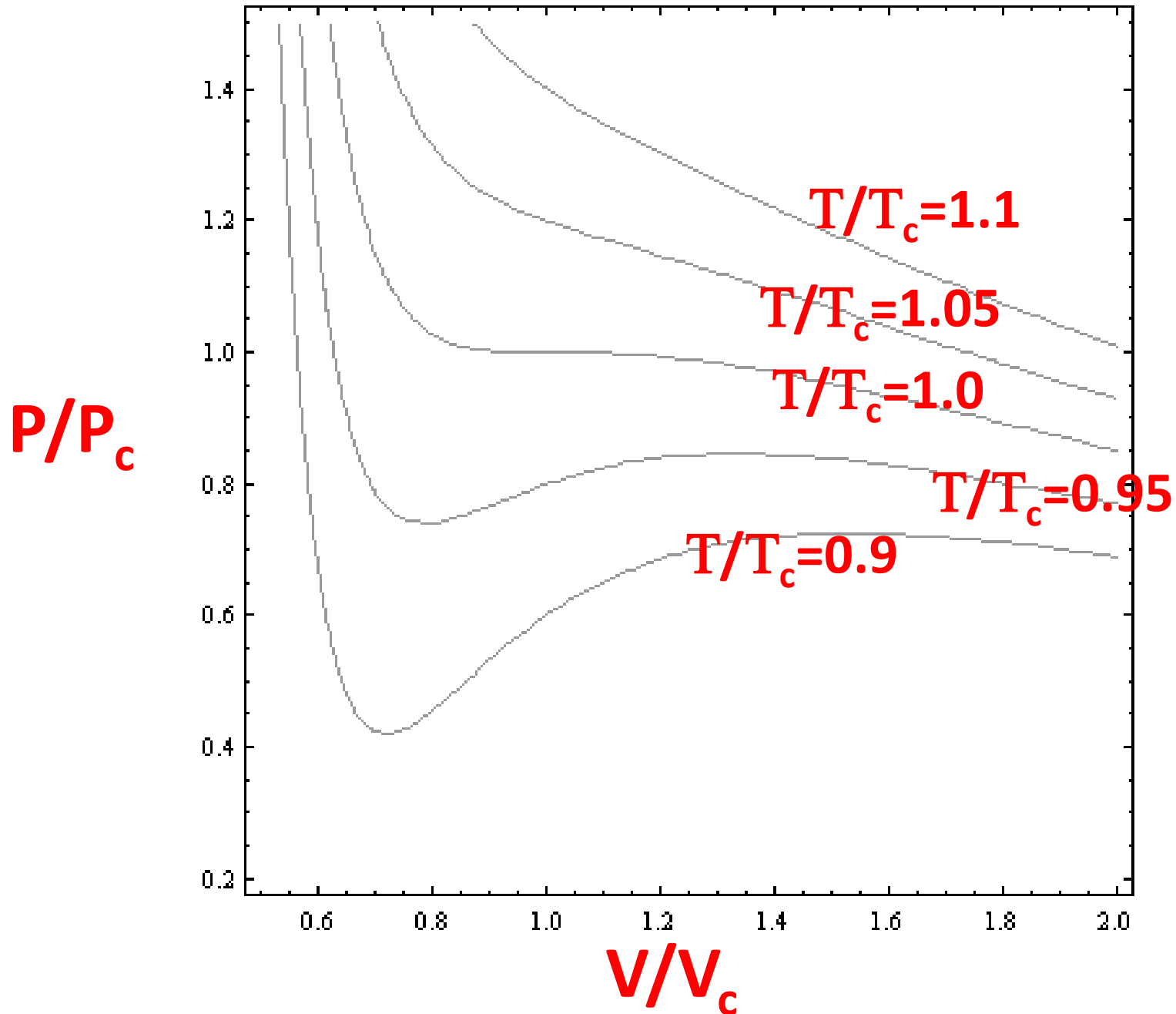


Van der Waals Isotherms



The Law of Corresponding States in the van der Waals Gas

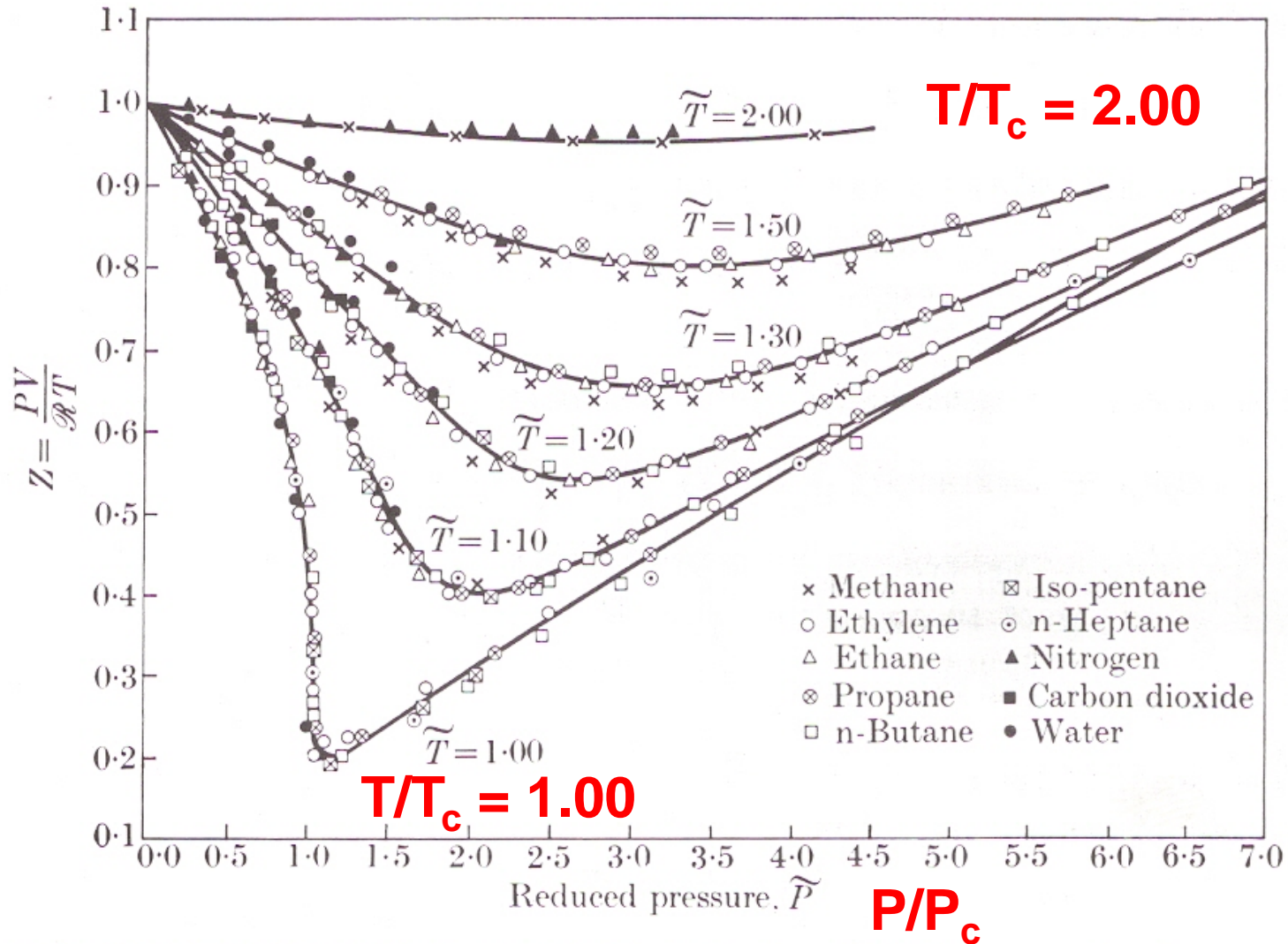


FIG. 5.3. Dependence of the compressibility ratio $Z \equiv PV/RT$ upon reduced pressure \tilde{P} for different reduced temperatures \tilde{T} . The fact that the data for a wide variety of fluids fall on identical curves supports the law of corresponding states. After Su (1946).

Van der Waals isotherms

